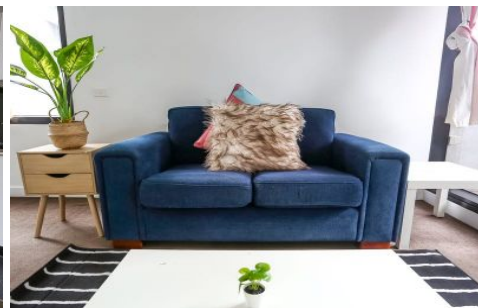
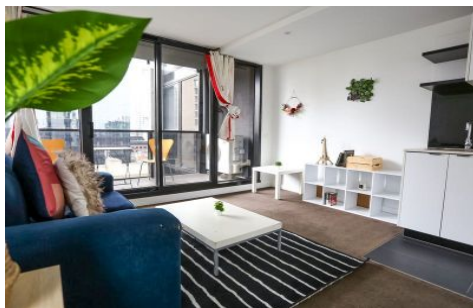


RENTED



1601/7 Katherine Place Melbourne VIC

1 1

This one-bedroom apartment is perfectly located in the heart of Melbourne, with easy access to trams and Flinders Street Station. Just minutes away from Melbourne Aquarium, Crown Casino, office buildings, and Emporium Shopping Centre.

The open-plan living area features a large balcony, a generous king-size bedroom, and a modern bathroom - all rare for city apartments. Enjoy unblocked views, excellent ventilation, and plenty of natural light.

Furniture Included:

- * Queen Bed
- * Dining Table & Chairs

Type : Apartment

View : <https://www.rentedpm.com.au/8665388>



Emily Chen
0393492645

[For full version visit the website](#)

