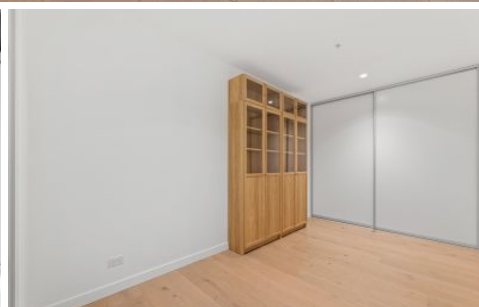
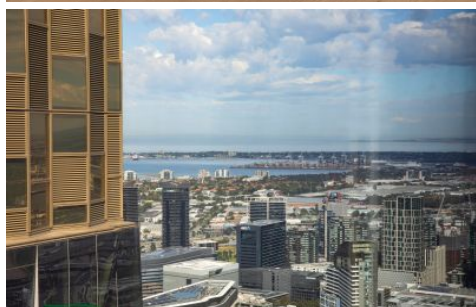


# RENTED



**6306b/639 Little Lonsdale St Melbourne VIC**

2  1  1 

Set high on Level 63 within the landmark West Side Place, 6306B/639 Little Lonsdale Street, Melbourne offers renters the ultimate inner-city lifestyle with comfort, convenience, and premium resident facilities.

This well-designed two-bedroom apartment delivers a practical open-plan layout filled with natural light and elevated city views. The modern kitchen features stone benchtops, quality appliances, and ample storage, flowing seamlessly into the living and dining area, perfect for relaxed everyday living.

The bedroom is fitted with built-in robes and is serviced by a sleek, fully tiled bathroom. A secure car space adds rare

**Type** : Apartment

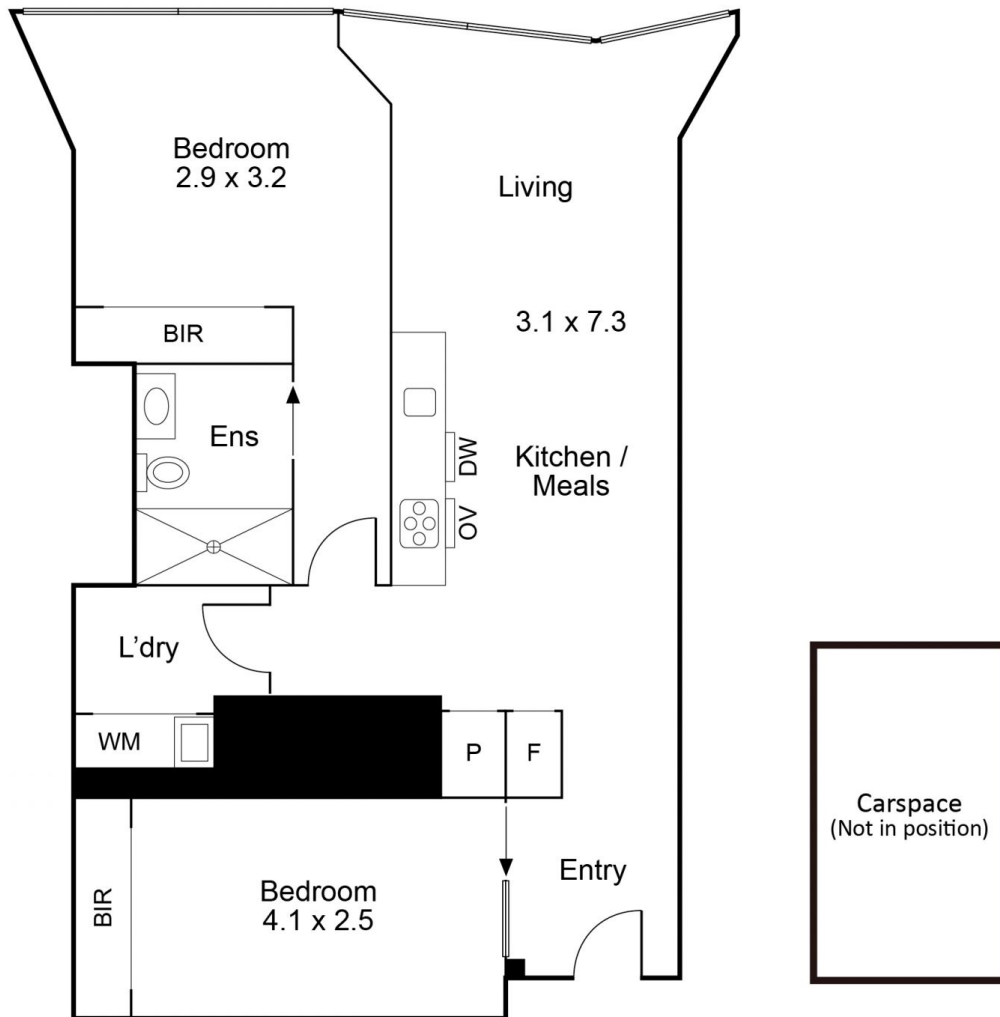
**View** : <https://www.rentedpm.com.au/8659297>



**Cindy Wei**  
**03 9349 2645**

[For full version visit the website](#)

6306/639 Little Lonsdale Street, Melbourne



All measurements are approximate estimations. Every care has been taken to verify the accuracy of details on this floorplan and brochure.