

# RENTED



**1/389 High Street Road Mount Waverley VIC**

2 1 1

Elevated above the street and filled with natural light, this charming unit offers a relaxed lifestyle in a highly convenient location. Corner windows brighten every room, while polished floorboards and high ceilings add character and warmth throughout.

What This Home Offers:

- \* Front unit in a quiet block of just two
- \* Two bright and spacious bedrooms
- \* Central bathroom plus separate toilet
- \* Generous lounge with polished floors and a feature fireplace
- \* Modern kitchen/meals area with dishwasher, oven, and

**Type** : Unit

**View** : <https://www.rentedpm.com.au/8616577>



**Victor Lee**  
0393492645

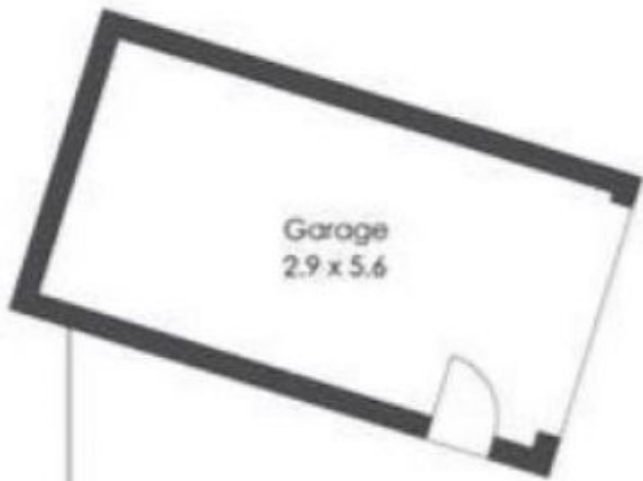


**Pancho Xu**  
03 93492645

[For full version visit the website](#)



Produced by DIAKRIT



Site Plan

