

RENTED



2303/18 Hoff Bvd Southbank VIC

2  2 

Welcome to 2303/18 Hoff Boulevard, an inviting modern apartment in the prestigious Melbourne Square precinct, perfectly positioned to enjoy the best of Southbank's vibrant city lifestyle.

This well-designed residence offers a stylish open-plan living and dining area that captures natural light, complemented by a contemporary kitchen ready for daily living. The apartment includes two generously sized bedrooms and two well-appointed bathrooms, offering comfortable and practical inner-city living ideal for professionals, couples or investors alike. Situated on a high floor, this property provides outlook and a welcoming sense of space in a central location.

Type : Unit

View : <https://www.rentedpm.com.au/8607290>

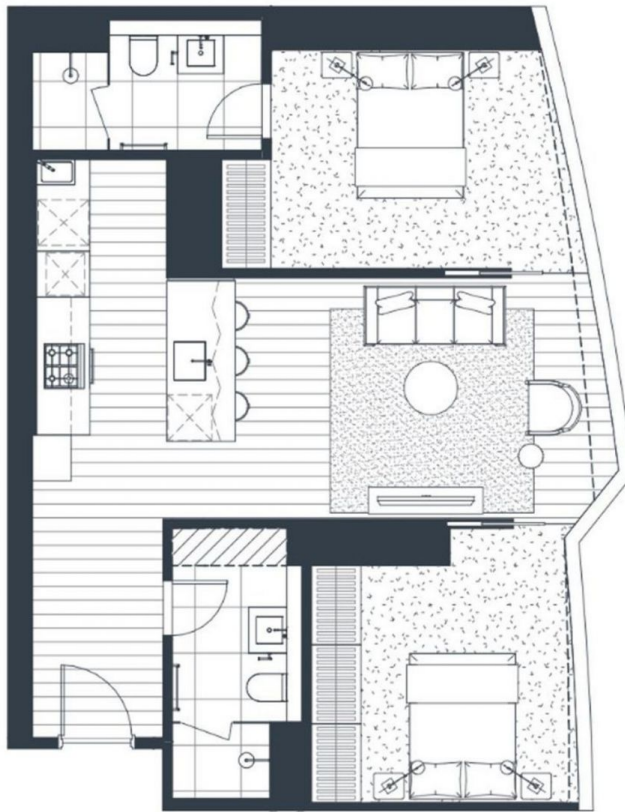


Emily Chen
0393492645

[For full version visit the website](#)

Dashed line denotes the façade line variation across
Floor plates within this type. Refer to the sales list for
specific apartment areas.

Hatch area denotes the column size variation
across floor plates within this type. Refer to
the sales list for specific apartment areas.



Kavanagh Street



West Tower



East Tower

Power Street

2 Bed, 2 Bath East Tower

Total Area Range:
72.7m² - 78.5m²

Apartment No:

1103E, 1203E, 1303E, 1403E,
1503E, 1603E, 1703E, 1803E,
1903E, 2003E, 2103E, 2203E,
2303E, 2703E, 2803E, 2903E,
3003E, 3103E, 3203E, 3303E,
3403E, 3503E, 3603E, 3703E,
3803E, 3903E, 4003E, 4403E,
4503E, 4603E, 4703E, 4803E,
4903E, 5003E, 5103E, 5203E

