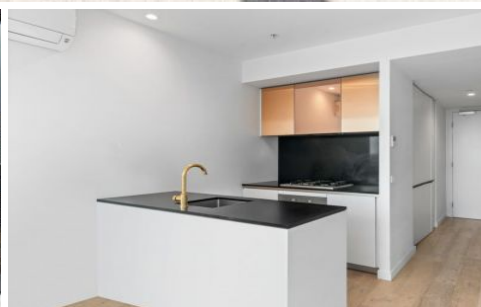
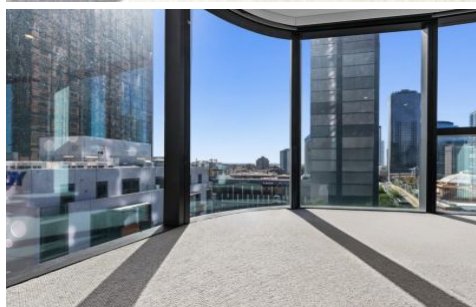


RENTED



1903/228 La Trobe St Melbourne VIC

2 1

Positioned high on Level 19, this stylish contemporary apartment offers an exceptional lifestyle right in the heart of Melbourne CBD. With impressive floor-to-ceiling windows, the home is bathed in natural light and showcases uninterrupted panoramic city views.

Type : Unit
View : <https://www.rentedpm.com.au/8595455>

Property Features:

- * Two well-sized bedrooms with mirrored built-in wardrobes
- * Spacious open-plan living and dining area with expansive corner glazing
- * Sleek modern kitchen with gas cooktop, premium appliances, and gold tapware
- * Stylish bathroom with quality fixtures, generous storage & walk-in shower



Cindy Wei
03 9349 2645

[For full version visit the website](#)



1903/228 La Trobe St Melbourne

All measurements are approximate and for illustrative purposes only. It should not be considered absolutely accurate. Interested parties should rely on their own enquiries.