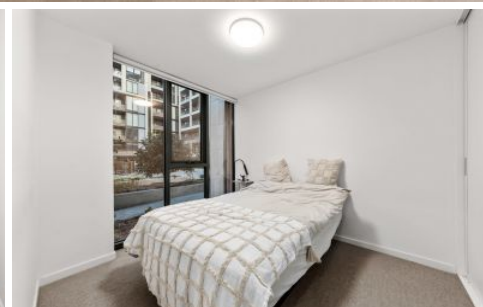


# RENTED



## g06/51 Homer St Moonee Ponds VIC

4 3 2

Positioned in a sought-after lifestyle precinct, this impressive double-storey townhome offers the perfect blend of space, comfort, and convenience. Designed for modern living, the residence provides all the benefits of a private home while giving residents exclusive access to resort-style amenities.

**Type** : Apartment

**View** : <https://www.rentedpm.com.au/8580060>

### Property Highlights:

- ? Four well-proportioned bedrooms across two levels
- ? Bright, open-plan living and dining area
- ? Contemporary kitchen with stone benchtops and quality appliances
- ? Double-glazed windows for year-round comfort
- ? Butler laundry and excellent built-in storage throughout



**Pancho Xu**  
03 93492645

[For full version visit the website](#)



LOWER LEVEL



UPPER LEVEL

## G06/51 HOMER STREET, MOONEE PONDS

### DISCLAIMER

PLANS SHOWN ARE FOR MARKETING PURPOSES ONLY. ALL DIMENSIONS ARE APPROXIMATE AND NOT TO SCALE. THEY ARE SUBJECT TO ERRORS AND INACCURACIES AND NO LIABILITY WILL BE ACCEPTED. INTERESTED PARTIES SHOULD MAKE THEIR OWN ENQUIRIES.