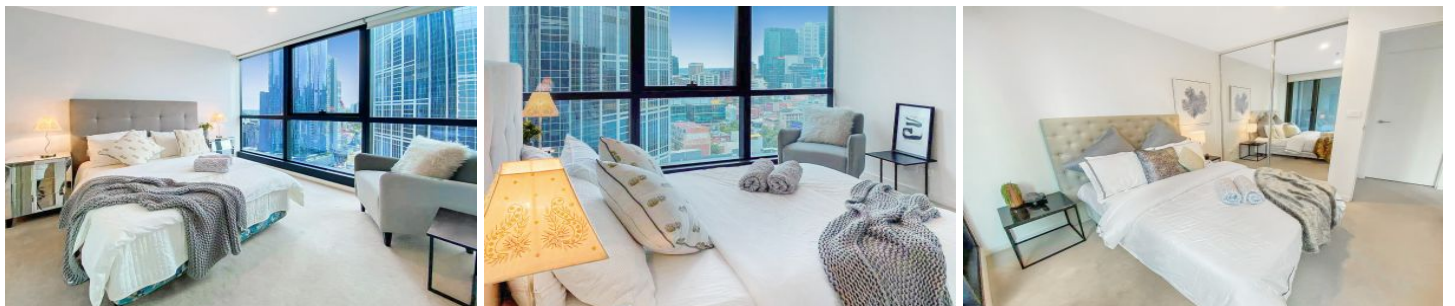


RENTED



2508/8 Sutherland Street Melbourne VIC

2 🛏 2 🚿 1 🚗

Perfectly positioned in the heart of Melbourne CBD, this stylish apartment in the popular *Melbourne Star* building offers unbeatable convenience and vibrant city living. Located right at the corner of Little Lonsdale Street and Elizabeth Street, you'll have everything the city has to offer right at your doorstep.

Type : Apartment

View : <https://www.rentedpm.com.au/8574804>

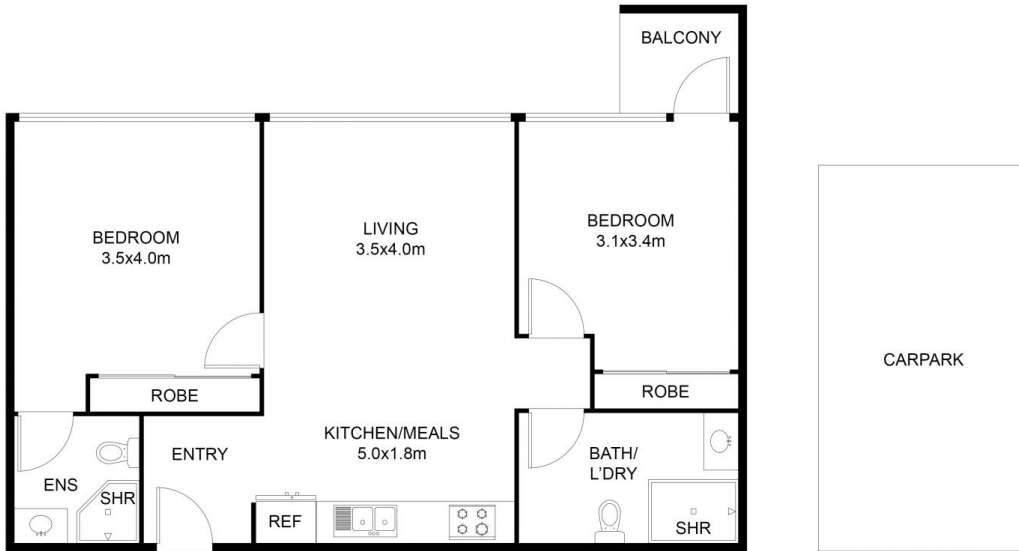
Location Highlights:

- * Melbourne Central Shopping Centre
- * Emporium Melbourne
- * Multiple cafés and restaurants
- * Tram lines and train station
- * Supermarkets and specialty shops

[For full version visit the website](#)



Cindy Wei
03 9349 2645



FLOOR PLAN

Total Floor area: 63.3 m²

This floor plan including furniture, fixture measurements and dimensions are approximate and for illustrative purposes only.
First National Real Estate gives no guarantee, warranty or representation as to the accuracy and layout.
All enquiries must be directed to the agent, vendor or party representing this floor plan.