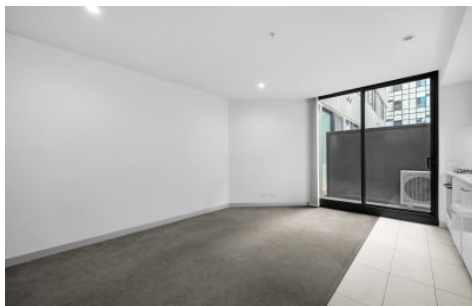


# RENTED



**814/6 Leicester St Carlton VIC**

1 1

Perfectly positioned in one of Melbourne's most vibrant locations, this stylish apartment offers the ultimate in convenience and lifestyle. With Queen Victoria Market right across the street, Melbourne University and RMIT just a short stroll away, and an abundance of cafes, restaurants, and public transport options at your doorstep, you'll experience true city living with everything you need within easy reach.

Inside, you'll find modern interiors with quality finishes designed for both comfort and style, complemented by spectacular city views. This apartment is ideal for those seeking a low-maintenance, urban lifestyle in a highly sought-after location.

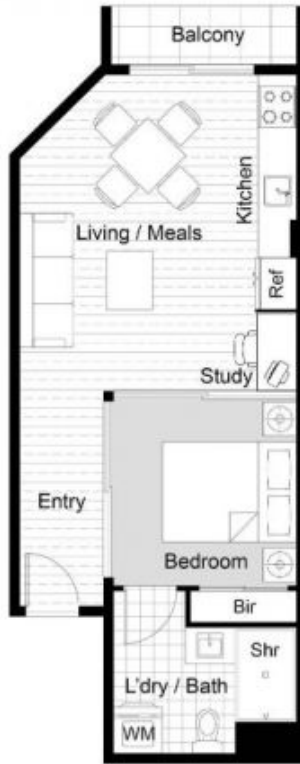
**Type** : Apartment

**View** : <https://www.rentedpm.com.au/8492828>



**Cindy Wei**  
**03 9349 2645**

[For full version visit the website](#)



## FLOOR PLAN

This floor plan including furniture, fixture measurements and dimensions are approximate and for illustrative purposes only. BoxBrownie.com gives no guarantee, warranty or representation as to the accuracy and layout. All enquiries must be directed to the agent, vendor or party representing this floor plan.