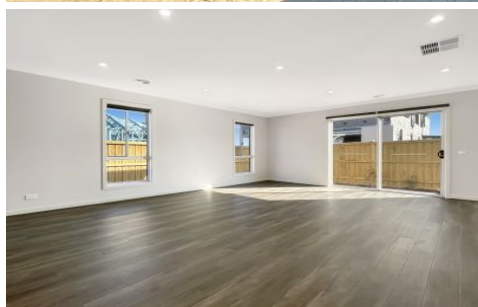


# RENTED



**24 Ipswich Ave Werribee VIC**

3 2 2

Be the first to enjoy this brand new three-bedroom home in the ever-growing Werribee community. Designed with comfort and convenience in mind, the property features a spacious master bedroom with ensuite and walk-in robe, along with two additional bedrooms and one study that are ideal for family or guests. The open-plan living and dining area is filled with natural light, creating the perfect setting for both everyday living and entertaining. A modern kitchen with quality finishes and plenty of storage adds both style and practicality.

With two bathrooms (including one ensuite), a secure double garage, and a low-maintenance yard, this home offers everything needed for a relaxed lifestyle. Situated

**Type** : House

**View** : <https://www.rentedpm.com.au/8468716>



**Cindy Wei**  
03 9349 2645



**Alvin Chan**  
0393492645

[For full version visit the website](#)

